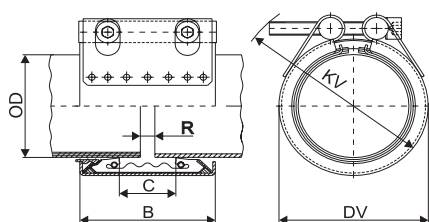


Specification STRAUB-COMBI-GRIP Ø 40.0 – 250.0 mm

Components / Materials	W1	W2	W4	W5
Casing		AISI 304	AISI 304	
Screws		AISI 4135 ^o	AISI 316 / 316 L	
Bolts		AISI 12L 14, galvanized	AISI 304	
Anchoring ring		AISI 301	AISI 301	
Strip insert (option)		AISI 316 L / PVDF	AISI 316 L / PVDF	
Sealing sleeve	Temp.: < 160.0 mm = -30°C up to +100°C; > 160.0 mm = -20°C up to +80°C			
EPDM	Medium: all qualities of water, waste water, air, solids and chemical products			
Sealing sleeve	Temp.: -20°C up to +80°C			
NBR	Medium: water, gas, oil, fuel and other hydrocarbons			

STRAUB-COMBI-GRIP



STRAUB-COMBI-GRIP (for transitions)

Pipe		Clamping range		Nominal pressure	Dimensional data				Setting gap between pipe ends R		Locking bolts		
plastic OD (mm)	metal (mm)	plastic (mm)	metal (mm)		PN (bar)	B (mm)	C (mm)	DV (mm)	KV (mm)	without strip insert (mm)	with strip insert (mm)	torque rate (Nm)	allen head (mm)
40.0	38.0	39.0 - 40.5	37.5 - 39.0	16	61	19	60	90	5	5 - 10	15	6	8
40.0	42.4	39.0 - 40.5	42.0 - 43.5	16	61	20	63	95	5	5 - 10	15	6	8
50.0	48.3	49.0 - 50.5	47.8 - 49.0	16	61	26	70	100	5	5 - 10	15	6	8
63.0	60.3	62.0 - 64.0	59.7 - 61.0	16	76	32	85	115	5 - 10	5 - 25	20	6	8
75.0	76.1	74.0 - 76.0	75.0 - 77.5	16	94	39	100	137	5 - 10	5 - 25	35	8	10
90.0	88.9	89.0 - 91.0	87.0 - 90.0	16	94	39	118	152	5 - 10	5 - 25	35	8	10
110.0	108.0	109.0 - 111.0	106.5 - 110.5	16	94	39	135	167	5 - 10	5 - 25	35	8	10
110.0	114.3	109.0 - 111.0	112.0 - 116.0	16	97	45	140	177	5 - 10	5 - 25	35	8	10
114.3	114.3	113.0 - 115.0	112.0 - 116.0	16	94	39	139	172	5 - 10	5 - 25	35	8	10
140.0	139.7	139.0 - 142.0	137.5 - 141.0	16	109	43	168	200	5 - 15	5 - 30	60	10	12
160.0	159.0	159.0 - 162.0	157.0 - 160.5	16	109	43	188	215	5 - 15	5 - 30	60	10	12
180.0	180.0	179.0 - 182.0	178.0 - 181.5	10	141	80	205	255	5 - 15	5 - 35	70	10	12
200.0	206.0 ³	199.0 - 202.0	204.0 - 208.0	7	141	80	230	275	5 - 15	5 - 35	70	10	12
225.0	219.1	224.0 - 227.0	216.9 - 221.3	6	141	80	255	300	5 - 15	5 - 35	70	10	12
250.0	256.0 ³	249.0 - 252.0	253.5 - 258.5	5	141	80	280	325	5 - 15	5 - 35	70	10	12

Legend:

– W1–W5 according to DIN Standard 86128 (ASTM F1476 / F1548, ISO/NP-15837 / 15838).

^o Property class 12.9, Dacromet 500 (zinc-chromate with integrated lubricant).

³ Standard pipe dimension for stainless steel (outer diameter related to the wall thickness). For minimum wall-thickness of pipe see p. 27 or contact factory.

Remarks:

– Follow fitting / disassembly instructions. Test pressure = 1,5 x PN / PS.

– For the installation of pipes made of HDPE and PP. **Stiffening rings STRAUB-PG required.**

– Weight of the pipe couplings see separate packing specifications.

– Strip insert is required when gap between pipe ends is excessive, in presence of swelling, elevated temperatures, vacuum/depression (suction line), or external pressure (see p. 26). Strip inserts are available, under separate order, at additional costs.